

Compressed plane waves - compactly supported multiresolution basis for the Laplace operator

Vidvuds Ozoliņš* Rongjie Lai† Russel Caflisch‡ and Stanley Osher‡

*Department of Materials Science and Engineering, University of California, Los Angeles, USA., †Department of Mathematics, University of California, Irvine, USA., and

‡Department of Mathematics, University of California, Los Angeles, USA.

This paper describes an L_1 regularized variational framework for developing a spatially localized basis, compressed plane waves (CPWs), that spans the eigenspace of a differential operator, for instance, the Laplace operator. Our approach generalizes the concept of plane waves to an orthogonal real-space basis with multi-resolution capabilities.

L_1 Regularization | Laplace Operator | Compressed Plane Waves

Significance: *Linear expansions in basis functions are used to approximate continuous functions in many areas of engineering, science and mathematics. Plane waves are perhaps the most widely used example of a general basis that is both simple and efficient. However, individual plane waves are spatially delocalized and hence a large number of basis functions becomes necessary to describe rapidly varying phenomena. We propose a generalization of the plane wave basis, called compressed plane waves, which combine multi-resolution properties in both time and frequency domains. These functions are derived from an L_1 regularized variational principle for a differential operator (Laplacian) and can efficiently represent functions which contain both slowly and rapidly varying features.*

Generality, conceptual simplicity, and development of efficient numerical algorithms based on the fast Fourier transform (FFT) have facilitated the adoption of plane waves as canonical basis functions for countless applications in engineering, science and mathematics (Ref. [1, 2]). Since the plane waves are continuously differentiable eigenfunctions of the Laplace operator, they are well suited for representing solutions to partial differential equations (PDEs) of mathematical physics, such as those arising in quantum mechanics and electrodynamics. One of the most attractive features of plane waves is the ability to systematically increase spatial (or temporal) resolution by including higher kinetic energy (or frequency) components. However, since the plane waves are global functions, resolution is increased uniformly throughout the entire space, while in practice high resolution may be required only in a small fraction of the problem domain. The need for functions that can represent multiple length scales has spurred the development of wavelets (Ref. [3]), which are localized basis functions with multi-resolution capabilities. Wavelets have been tremendously successful in fields such as signal processing, image science, and data science, but adoption of wavelets as basis for solving PDEs has been difficult because it is numerically complicated to evaluate the derivative of a wavelet in a wavelet expansion. Furthermore, canonical wavelet functions usually can only be defined on regular domains in \mathbb{R}^d by tensor products of wavelets in one dimension (1D), which makes them difficult to generalize to irregular domains.

In this paper, we extend our earlier work in Ref. [4] and propose a new method for generating localized orthonormal basis that is adapted to a given differential operator, in particular, the Laplace operator. In Ref. [4], we showed that L_1 regularization of the variational formulation of the Schrödinger equation of quantum mechanics can be used to create compressed modes, a set of spatially localized functions $\{\psi_i\}_{i=1}^N$

in \mathbb{R}^d with compact support:

$$E = \min_{\Psi_N} \sum_{j=1}^N \left(\frac{1}{\mu} |\psi_j|_1 + \langle \psi_j, \hat{H} \psi_j \rangle \right) \quad \text{s.t.} \quad \langle \psi_j, \psi_k \rangle = \delta_{jk}, \quad [1]$$

where $\hat{H} = -\frac{1}{2}\Delta + V(\mathbf{x})$ is the Hamilton operator corresponding to potential $V(\mathbf{x})$, $\Psi_N = \{\psi_j\}_{j=1}^N$ are variational single-particle orbitals, and L_1 norm is defined as $|\psi_j|_1 = \int_{\Omega} |\psi_j| d\mathbf{x}$. This L_1 regularized variational approach describes a general formalism for obtaining localized (in fact, compactly supported) solutions to a class of mathematical physics PDEs, which can be recast as variational optimization problems. One of the main advantages of this variational approach is that one parameter μ controls both the physical accuracy and the spatial extent of the resulting solutions: the wave functions ψ_j are nonzero only where required to achieve a given accuracy for the total energy and zero everywhere else. Another advantage of our L_1 regularized variational method is its natural adaptability to irregular domains in \mathbb{R}^d , manifolds, and graphs.

As a major contribution in this paper, we develop a variational framework for generating a new set of spatially localized orthonormal functions with multi-resolution capabilities, adapted for the Laplace operator. Using the L_1 regularized variational method with $V = 0$ in Eq. [1], we generate a set of orthogonal, compactly supported real-space basis functions for the Laplace operator with multi-resolution capabilities. Orthogonality is imposed in the manner of Ref. [5] for shift-orthogonal wavelets, which in the context of our approach means that the basis functions are orthogonal to their translations by all vectors belonging to a given lattice (see Eq. [2]). In addition to shift-orthogonality, we introduce a hierarchy of compressed waves obtained from the variational formula, which provide different scales of multi-resolution analysis. This is accomplished by enforcing additional orthogonality constraints on $\psi(\mathbf{x})$ in the variational model Eq. [1], expressed below by the variational formulas Eqs. [3] and [4]. As discussed in Ref. [4], the properties of L_1 regularization ensure that the resulting functions have compact support in real space. These functions are referred to as basic compressed plane waves (BCPWs). A complete basis set of orthonormal compressed plane waves (CPWs) can be generated from the BCPWs by translations on a d -dimensional lattice. In contrast to approaches for generating localized basis in high dimension using tensor products of 1D basis functions, our variational method provides a direct method to create localized basis in high-dimensional space. Moreover, this framework can also be naturally extended to more general elliptic operators. Numerical algorithm is designed to efficiently solve the non-convex optimization problem for constructing BCPWs, and a fast CPW transform and fast inverse CPW transform are developed for transforming between frequency space and real space. Numerical experiments demonstrate that CPWs can efficiently represent spatially localized functions, suggesting advantages over canonical basis of extended functions such as plane waves.

Compressed Plane Waves (CPWs)

We consider an elliptic Hamilton operator $\hat{H}_0 = -\Delta/2$ defined in \mathbb{R}^d , which describes the movement of free electrons. Let $\mathbf{w} = (w_1, \dots, w_d) \in \mathbb{R}_+^d$ be a basis of a d -dimensional lattice,

$$\Gamma_{\mathbf{w}} = \{\mathbf{j}\mathbf{w} := (j_1 w_1, \dots, j_d w_d) \mid \mathbf{j} = (j_1, \dots, j_d) \in \mathbb{Z}^d\}. \quad [2]$$

Inspired by the variational model for compressed modes (CMs) introduced in Ref. [4], we introduce a set of localized orthonormal CMs $\{\psi^n\}_{n=1}^\infty$ defined by:

$$\begin{aligned} \psi^1 &= \arg \min_{\psi} \frac{1}{\mu} \int_{\Omega} |\psi| dx + \int_{\Omega} \psi \hat{H}_0 \psi dx \\ \text{s.t.} \quad & \int_{\Omega} \psi(\mathbf{x}) \psi(\mathbf{x} - \mathbf{j}\mathbf{w}) dx = \delta_{j_0}, \quad \mathbf{j} \in \mathbb{Z}^d. \end{aligned} \quad [3]$$

The higher CMs can be recursively defined as:

$$\begin{aligned} \psi^n &= \arg \min_{\psi} \frac{1}{\mu} \int_{\Omega} |\psi| dx + \int_{\Omega} \psi \hat{H}_0 \psi dx \\ \text{s.t.} \quad & \begin{cases} \int_{\Omega} \psi(\mathbf{x}) \psi(\mathbf{x} - \mathbf{j}\mathbf{w}) dx = \delta_{j_0}, & \mathbf{j} \in \mathbb{Z}^d \\ \int_{\Omega} \psi(\mathbf{x}) \psi^i(\mathbf{x} - \mathbf{j}\mathbf{w}) dx = 0, & i = 1, \dots, n-1 \end{cases} \end{aligned} \quad [4]$$

Here, the parameters μ and \mathbf{w} are given. With the help of the localized orthonormal modes $\{\psi^n\}_{n=1}^\infty$, we can construct a set of orthonormal functions as follows.

Definition 1. We define $\{b_j^n(\mathbf{x}) = \psi^n(\mathbf{x} - \mathbf{j}\mathbf{w})\}_{j \in \mathbb{Z}^d}^{n=1,2,3,\dots}$. We call $\{\psi^n\}_n$ the basic compressed plane waves (BCPWs) and call $\{b_j^n\}_{n,j}$ the compressed plane waves (CPWs).

Based on our numerical experiments (see Fig. 2), we expect that the CPWs are complete and form an orthonormal basis. We formulate the following conjecture for the completeness of CPWs, which will be studied in future work.

Conjecture 1. (Completeness of CPWs) *There exists a constant μ_0 such that the set of orthonormal functions $\{b_j^n\}_{j \in \mathbb{Z}^d}^{n=1,2,3,\dots}$ generated from Eqs. [3]–[4] is complete for any $\mu \geq \mu_0$.*

The proposed method for constructing CPWs in high dimensions is essentially different from the usual way of generalizing a 1D basis to the multidimensional case by using the tensor product. Moreover, it is also clear that the index n controls the size of the compact support and the scale of CPWs, while \mathbf{j} controls the shift. These two parameters are analogous to the scale and shift parameters in the wavelet theory, which in the future might help in building a new method of multi-resolution analysis. In addition, the following scaling formula, which can be obtained by a simple change of variables, indicates the relation between the parameter μ and the lattice basis \mathbf{w} .

Property 1. (Scaling formula) *If we write $\psi_{\{\mu, \mathbf{w}\}}^n(\mathbf{x})$ as the n -th BCPW obtained from Eqs. [3]–[4] with parameters μ, \mathbf{w} , then the following formula holds for BCPWs $\psi_{\{s^{2+d/2}\mu, s\mathbf{w}\}}^n$ defined on scaled lattice $s\mathbf{w}$:*

$$\psi_{\{\mu, \mathbf{w}\}}^n(\mathbf{x}) = s^{d/2} \psi_{\{s^{2+d/2}\mu, s\mathbf{w}\}}^n(s\mathbf{x}). \quad [5]$$

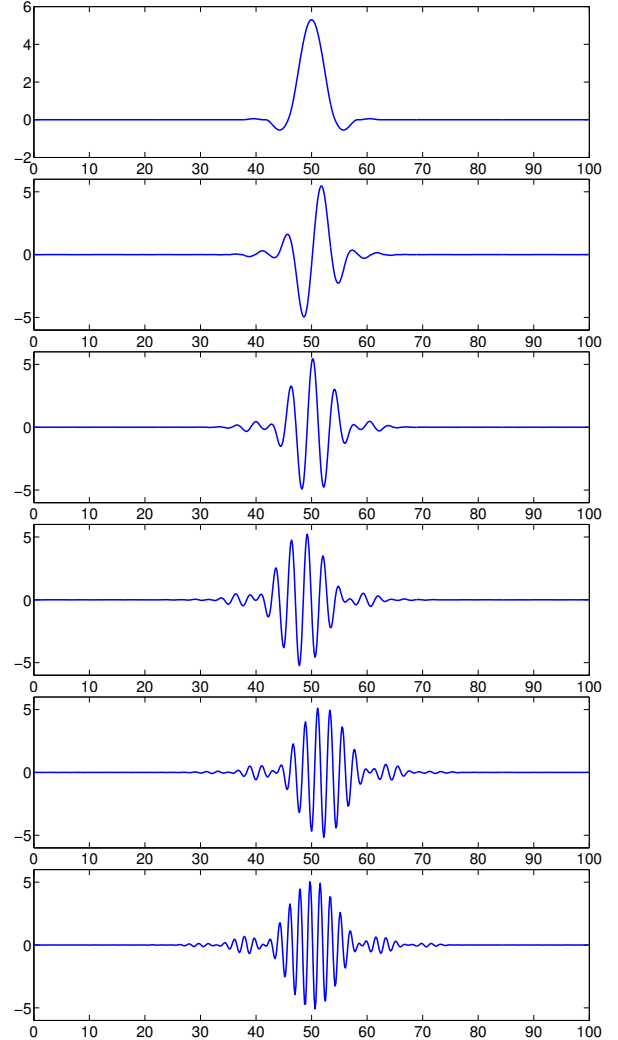


Fig. 1. From top to the bottom, the first six modes $\psi^1, \psi^2, \psi^3, \psi^4, \psi^5, \psi^6$ obtained by Eqs. [3]–[4] using $L = 100, \mu = 5, w = 5$.

Numerical algorithms for constructing CPWs

To simplify our discussion, we only consider $\Omega = [0, L]$ in 1D with periodic boundary conditions; the algorithms for optimization problems Eqs. [3]–[4], as well as the fast transforms discussed below can be straightforwardly extended to higher dimensions.

To find the proposed BCPWs, we first solve Eq. [3]. By introducing an auxiliary variable $u = \psi$, the constrained optimization problem is equivalent to the following problem:

$$\begin{aligned} \psi^1 &= \arg \min_{\psi, u} \frac{1}{\mu} \int |u| dx + \int \psi \hat{H}_0 \psi dx \\ \text{s.t.} \quad & u = \psi \quad \& \quad \int \psi(x) \psi(x - jw) dx = \delta_{j_0}, \quad j \in \mathbb{Z}, \end{aligned} \quad [6]$$

which can be solved by an algorithm based on the Bregman iteration (Refs. [6, 7, 8]).

Algorithm 1. Initialize $\psi^{1,0} = u^0, b^0 = 0$.

while “not converged” do

1. $\psi^{1,k} = \arg \min_{\psi} \int \psi \hat{H}_0 \psi dx + \frac{\lambda}{2} \int (\psi - u^{k-1} + b^{k-1})^2 dx$
s.t. $\int \psi(x) \psi(x - jw) dx = \delta_{j0}, \quad j \in \mathbb{Z}.$
2. $u^k = \arg \min_u \frac{1}{\mu} \int |u| dx + \frac{\lambda}{2} \int (\psi^{1,k} - u + b^{k-1})^2 dx$
 $= \text{Shrink}(\psi^{1,k} + b^{k-1}, \frac{1}{\lambda\mu})$
3. $b^k = b^{k-1} + \psi^{1,k} - u^k.$

We solve the first problem in the above algorithm in the Fourier space, since the kinetic energy and the constraints are diagonal. In other words, let’s write $\psi = \sum_G \psi_G e^{iGx}$, $u^{k-1} = \sum_G u_G^{k-1} e^{iGx}$ and $b^{k-1} = \sum_G b_G^{k-1} e^{iGx}$. Then we need to solve the following problem:

$$\min_{\{\psi_G\}, \gamma_j} \sum_G \frac{G^2}{2} \psi_G^2 + \frac{\lambda}{2} \sum_G (\psi_G - u_G^{k-1} + b_G^{k-1})^2 + \sum_j \gamma_j \left(\sum_G \cos(Gjw) \psi_G^2 - \delta_{j0} \right), \quad [7]$$

where $\{\gamma_j\}$ are Lagrangian multipliers associated with the orthonormality constraints, which can be found from the following nonlinear equations:

$$\begin{cases} \sum_G \cos(Gjw) \psi_G^2 = \delta_{j0}, & j \in \mathbb{Z}, \\ \psi_G = \frac{\lambda(u_G - b_G)}{\lambda + G^2 + 2 \sum_j \cos(Gjw) \gamma_j}. \end{cases} \quad [8]$$

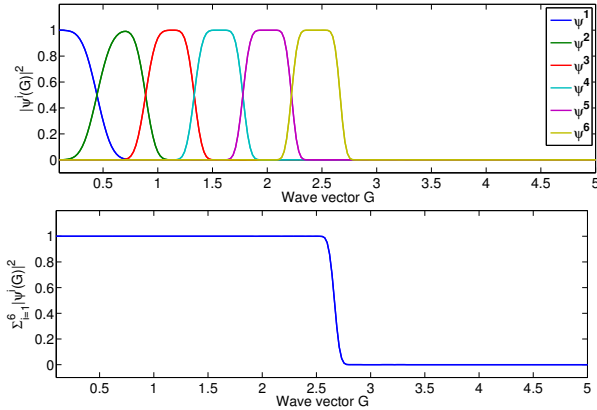


Fig. 2. Spectral density distribution of CPWs. Top: the spectral density distribution of $\psi^1, \psi^2, \psi^3, \psi^4, \psi^5, \psi^6$. Bottom: The total spectral density distribution of the first four modes.

One can go further and define higher order modes ψ^n that satisfy Eqs. [3]–[4]. The additional orthogonality constraints can be imposed using the method of splitting orthogonality constraint (SOC) proposed in Ref. [9] and adopted in Ref. [4] for calculating CMs. In Figure 1, we illustrate the first six modes $\psi^1, \psi^2, \psi^3, \psi^4, \psi^5, \psi^6$ obtained from Eqs. [3]–[4] using $L = 100$, $\mu = 5$, and $w = 5$.

The next interesting property is the distribution of the spectral weight $|\psi_G^i|^2$ and the total spectral weight $\sum_{i=1}^N |\psi_G^i|^2$ of the first six BCPWs, which are shown in Figure 2. The top panel of Figure 2 shows that each mode occupies a distinct region in the Fourier space. Moreover, the total spectral weight

of the first six BCPWs forms a smoothed step function, which is a desirable property for obtaining convergence rates similar to the plane wave basis. In other words, locally the basis covers approximately the same Fourier space as the plane wave basis below a given kinetic energy cutoff.

CPW representations of localized functions

Localization properties of the proposed CPWs can be expected to bring advantages in applications where objective functions have rapidly varying fine structure in localized spatial regions. Taking an example from quantum mechanics, we will demonstrate the performance of CPWs for a 1D periodic potential where one of the potential wells is deeper than the others. This is analogous to introducing an “impurity” atom in a bulk solid, resulting in the potential function illustrated in Figure 3; we call this an “impurity” Kronig-Penny (IKP) model. Using the first 120 CPWs generated by the first six BCPWs illustrated in Figure 1, we would like to demonstrate several advantages of the CPW representation for this case, which combines both localized “impurity” modes and delocalized “bulk” modes.

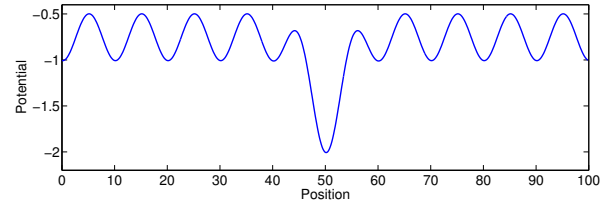


Fig. 3. The potential function $V(x)$ of the impurity Kronig-Penny model.

Choosing potential wells to be described by inverted Gaussians $V(x) = -V_0 \sum_{j=1}^{N_{el}} \exp\left[-\frac{(x-x_j)^2}{2\delta^2}\right]$ with $V_0 = 1$, $N_{el} = 9$, $\delta = 3$, $x_j = 10j$, and adding the central potential with $-2 \exp\left[-\frac{(x-50)^2}{2\delta^2}\right]$, the IKP model gives several localized impurity-like eigenstates. The blue curves in the left images of Figure 5 show the wave functions of the four lowest-energy states of the IKP model. We can successfully recover these localized functions using the six BCPWs (corresponding to 120 CPWs after translations) generated in the previous section. Representation results plotted by red dots in the left images of Figure 5 demonstrate the accuracy of the CPW expansion. In the right column of Figure 5, we compare the magnitude of the 80 largest CPW expansion coefficients with the classical Fourier plane wave coefficients for these wave functions. This figure clearly shows that CPWs can provide a much sparser representation of localized eigenfunctions than the plane wave basis. Table 1 gives a detailed comparison of the ℓ_2 error of the CPW representation and plane wave representation using the first few largest magnitude coefficients. It is promising that, in order to achieve the same accuracy, the number of required CPWs is significantly smaller than the number of plane waves.

# of modes	Representation Error using CPWs				Representation Error using Fourier basis			
	Error _{f₁}	Error _{f₂}	Error _{f₃}	Error _{f₄}	Error _{f₁}	Error _{f₂}	Error _{f₃}	Error _{f₄}
20	0.0091	0.0170	0.0305	0.0506	1.0282	1.3586	1.4886	0.4553
30	0.0051	0.0084	0.0111	0.0204	0.5052	0.8289	0.9951	0.2004
40	0.0038	0.0065	0.0076	0.0115	0.2112	0.4332	0.5875	0.0619
50	0.0036	0.0063	0.0066	0.0075	0.0763	0.1930	0.2964	0.0228
60	0.0035	0.0063	0.0064	0.0052	0.0242	0.0651	0.1304	0.0097
70	0.0035	0.0063	0.0064	0.0043	0.0068	0.0192	0.0470	0.0048

Table 1. Comparisons of Representation error using CPWs and Fourier basis.

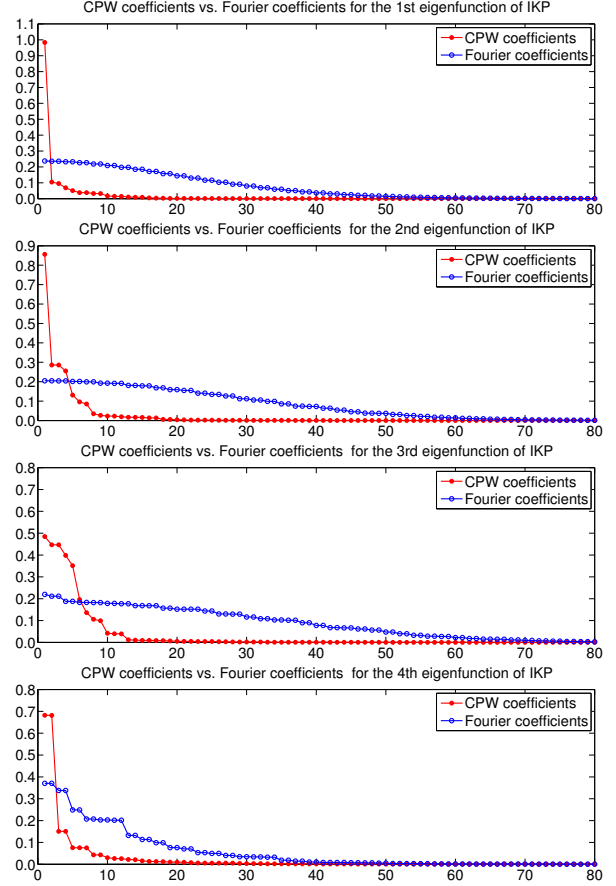
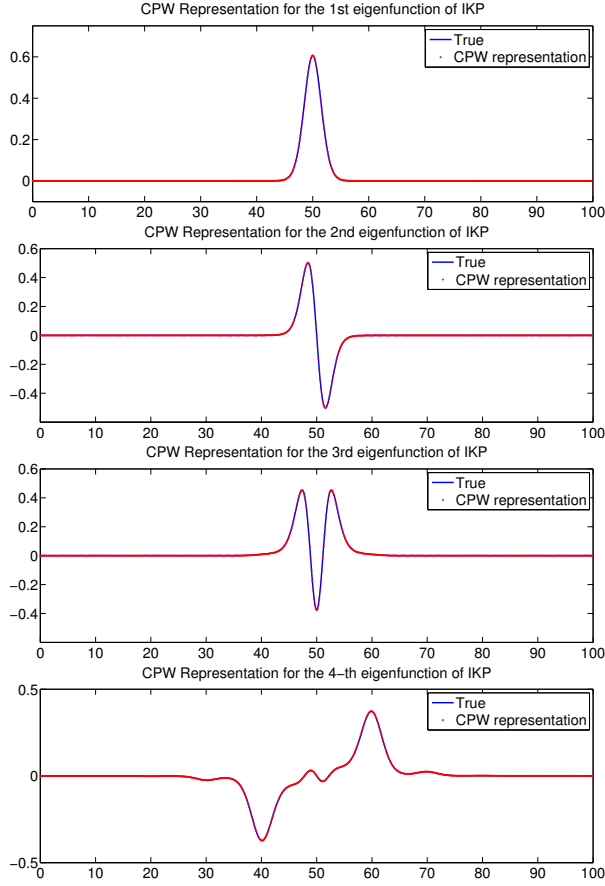


Fig. 5. CPW representations for the first four energy states of IKP model. Left: Comparisons of CPW representations for the first four eigenfunctions of the IKP model with their true values. Right: Comparisons of the first 80 largest magnitude coefficients of CPW representations and classical Fourier function representations.

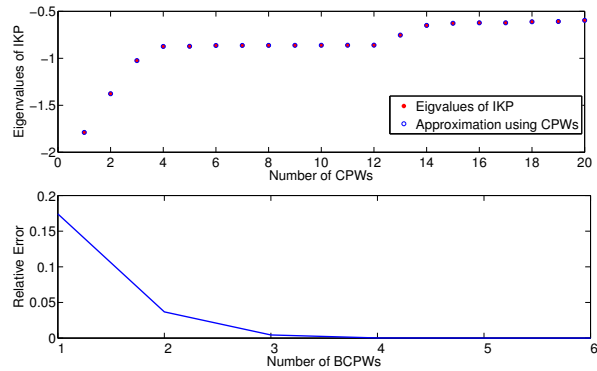


Fig. 4. Eigenvalues approximation for the IKP model using the CPW representation. Top: the first 20 approximated eigenvalues using the first 120 CPWs vs. true values. Bottom: relative eigenvalue approximation error using CPWs generated by the first 1 to 6 BCPWs.

CPWs can also be used to successfully approximate the low-energy eigenvalue spectrum of the IKP model. In other words, we calculate eigenvalues of the matrix $\{(b_j^n, \hat{H} b_i^m)\}_{i,j=1, \dots, N_{\text{BCPWs}}}$ (N_{BCPWs} is the number of BPCWs) and compare those with the "exact" eigenvalues of the Schrödinger operator \hat{H} of the IKP model, calculated using a spectral method with 640 nodes. In the top image of Figure 4, the red dots plot the lowest 20 "exact" eigenvalues of the IKP model, while the blue circles are approximation results using 120 CPWs. The bottom part of Figure 4 reports

the corresponding relative approximation error as a function of the number of BCPWs used in the basis. It is clear that the truncated CPW expansion provides an accurate approximation for the low-energy eigenvalues of \hat{H} , i.e., the original eigenvalue problem can be reduced to an eigenvalue problem of a significantly smaller matrix.

The conclusion is that CPWs become attractive if one needs to represent a function that varies slowly (or is zero) through most of the space, except for a few regions; plane waves would need to increase the spatial resolution uniformly in the whole domain, while one can add CPWs locally in the regions of interest. Moreover, in the next section we show that CPW expansions can be efficiently processed using FFT-based CPW transforms.

Fast CPW transforms

Given a function $f \in L^2([0, L])$, we propose an algorithm to perform the transformation from f in real space to the basis coefficients $\{f_j^n\}$ in frequency space. Recall that:

$$f_j^n = \int f(x) b_j^n(x) = \sum_G (b_G^n)^* e^{-i(Gjw)} \int f(x) e^{-iGx}. \quad [9]$$

where $\{b_G^n\}$ are the coefficients of $b_0^n = \psi^n$ in the CPW expansion. In other words, we write $b_0^n = \sum_G b_G^n e^{iGx}$, and we have

$$b_j^n = \sum_G b_G^n e^{iGx} e^{i(Gjw)}. \quad [10]$$

The computation of this transform can be performed efficiently in three steps as follows.

Algorithm 2. (Fast CPW Transform) 1. *Fourier Transform.*

$$f_G = \int f(x)e^{-iGx}dx.$$

2. *Multiplication and summation:* $\zeta_m^n = \sum_k (b_{G_m+kN_0}^n)^* f_{G_m+kN_0}$,
 $m = 0, \dots, N_0 - 1$, where $N_0 = \lfloor L/\omega \rfloor$, $G_m = \frac{2\pi m}{L}$.

3. *Fourier transforms of length N_0 to get the basis coefficients:*

$$f_j^n = \sum_{m=0}^{N_0-1} \zeta_m^n e^{-iG_j w}.$$

We demonstrate the fast CPW transform for the first four lowest-energy states of the IKP model. Figure 6 illustrates the accuracy of the proposed algorithm for the CPW transform: the two sets of points are on top of each other (red dots and blue circles are obtained from direct diagonalization and fast CPW transform, respectively).

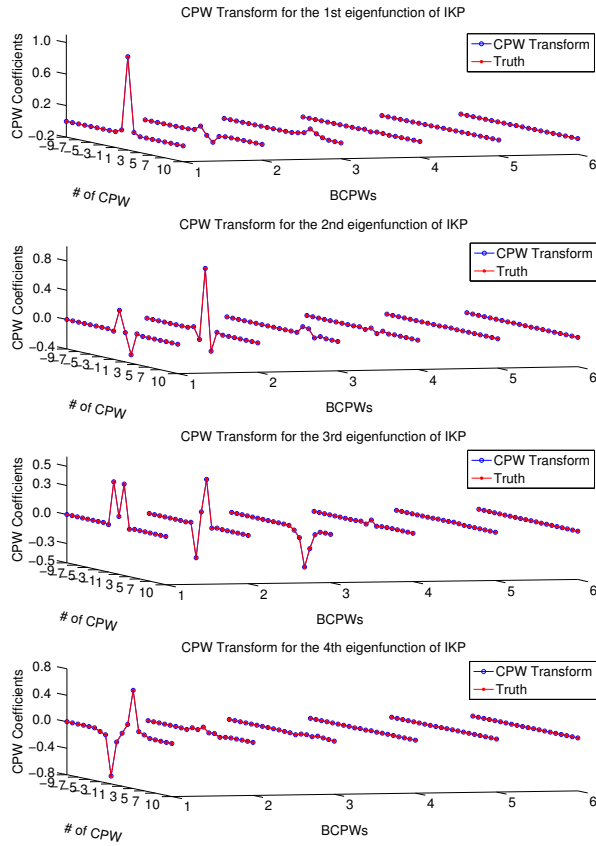


Fig. 6. CPW transform for the first four lowest-energy states of the IKP model, where 6 levels of CPW transform are shown separately for each energy state.

Next, we propose an algorithm for the inverse transformation from given CPW coefficients $\{f_j^n\}$ in frequency space to a function f in real space. We recall that:

$$f(x) = \sum_n \sum_j f_j^n b_j^n(x) = \sum_n \sum_j f_j^n \psi^n(x - jw). \quad [11]$$

Therefore, one can rewrite f as

$$f(x) = \sum_{n,j} f_j^n b_j^n(x) = \sum_n \sum_G b_G^n e^{iGx} \sum_j f_j^n e^{i(Gjw)}. \quad [12]$$

The above summation can be efficiently computed in the following three steps.

Algorithm 3. (Fast Inverse CPW Transform) 1. *Fourier Trans-*

$$\text{form. } \tilde{f}_m^n = \sum_{j=0}^{N_0-1} f_j^n e^{i(G_m j w)}, \text{ where } N_0 = \lfloor L/\omega \rfloor, G_m = \frac{2\pi m}{L}.$$

2. *Multiplication and summation.* Note that all \tilde{f}_m^n are periodic with a period N_0 . Hence, we calculate

$$\xi_m^n = b_{G_m}^n \tilde{f}_{\text{mod}(m, N_0)}^n.$$

Here, we only need to go up to Fourier coefficient values m for which the corresponding basis function $b_{G_m}^n$ has nonzero coefficients. Then we add contributions from all

$$n: \xi_m = \sum_n \xi_m^n.$$

3. *Fourier transform to real space* $f(x) = \sum_m \xi_m e^{iG_m x}$.

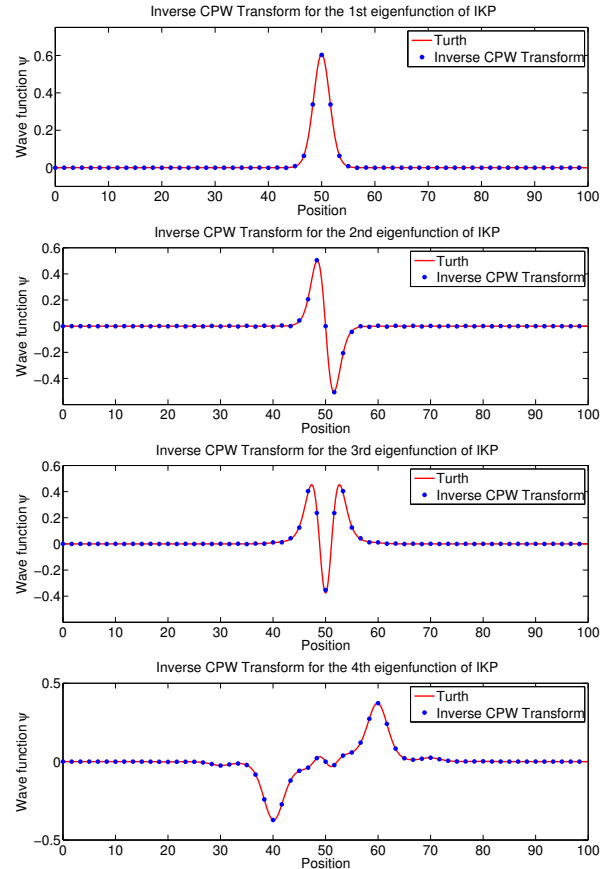


Fig. 7. Reconstruction results using inverse CPW transform for the first four lowest-energy states of the IKP model.

Using the first four lowest-energy states of the IKP model from Figure 5 as an example, we test the inverse CPW transform based on the above algorithm; Figure 7 shows the results, where the solid red line shows the “exact” results with a very fine mesh, while blue dots are obtained using the fast transform described above with a coarse mesh.

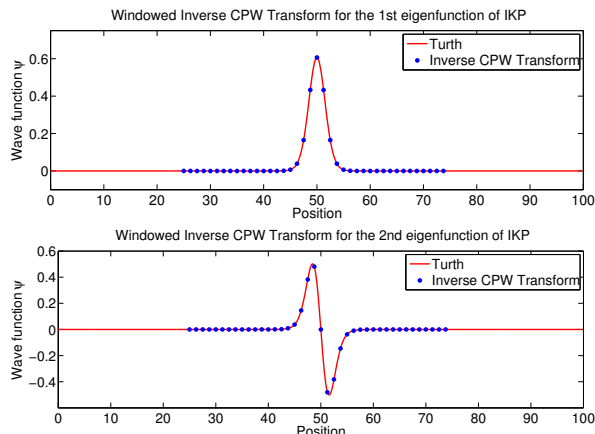


Fig. 8. Reconstruction results using windowed inverse CPW transform for the first two lowest-energy states of the IKP model.

Furthermore, these transforms can be “windowed”, which allows the use of different meshes in different spatial regions, instead of having to use the same real space mesh everywhere. We conduct numerical tests for the IKP model wave functions in Figure 7, except that these transforms are carried out only over the region where these functions are nonzero. Figure 8 reports the results obtained from the “windowed” inverse CPW transform, where the solid red line shows the “exact” results, while the blue dots are obtained using the “windowed” inverse CPW transform. Similarly, the CPW transform can also be windowed just like the “windowed” inverse CPW transform. These “windowed” transform will be useful when one needs higher resolution only in certain limited regions.

Finally, the proposed model and numerical algorithms work on domains in higher-dimensional space. As an example, Figure 9 shows computational results for the first BCPW of the Laplace operator on a 2D domain $[0, 100]^2$. It is worth noting that our approach to obtaining CPWs in higher dimensions is essentially different from the usual method of obtaining a multi-dimensional basis by using a tensor product of 1D basis functions.

Discussion and Conclusions

We have presented an L_1 regularized variational method for producing compressed plane waves (CPWs), which constitute an orthonormal basis derived from the Laplace operator. CPWs form a natural set of modes with two parameters representing position and scale, as in wavelets, but unlike wavelets, CPWs have their origin in a differential equation so that they may be used as a natural basis for solving PDEs and have a natural extension to higher dimensions. Numerical algorithms for solving the non-convex optimization problem defining CPWs have been proposed. Numerical experiments show that CPWs can represent localized functions more efficiently than the plane wave basis, while maintaining similar

performance as plane waves for spatially extended functions. Finally, fast transforms for transforming between the CPW coefficients and real-space mesh have been proposed. These algorithms can make use of highly efficient implementations of the fast Fourier transform and can be “windowed” to perform FFTs only over those regions of real space where the function expansion is non-zero.

The CPW basis set proposed here addresses the need for multi-resolution basis functions that can be defined for differential operators on general domains in \mathbb{R}^d . In this sense, our work extends earlier work in this area, such as the diffusion wavelet proposed in Ref. [10], which can be viewed as diffusion of delta functions where multi-resolution is obtained by choosing different diffusion times. The method of Ref. [10] is completely based on diffusion processing without considering any sparsity-inducing variational approach and compact support emerges as a result of auxiliary constraint, while in our work finite support is a natural consequence of a sparsity-inducing variational principle.

In the future, we expect to extend CPW techniques in a number of ways and adapt them to a variety of applications, such as: (i) construct CPWs for more general elliptic operators, (ii) use CPWs as a representation for solving multiscale PDEs, and (iii) extend CPWs to higher dimensions and irregular domains. Finally, we plan to perform a theoretical analysis of CPWs to rigorously study their existence and properties, including the completeness that was hypothesized in this work.

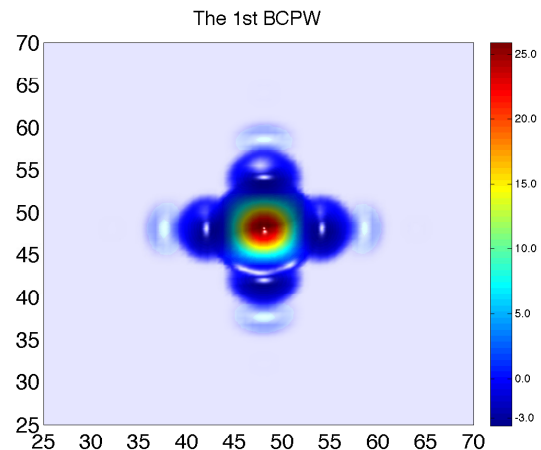


Fig. 9. The first BCPWs in a 2D domain $[0, 100]^2$ color-coded with its height functions, where we only show its non-zero part in domain $[25, 70]^2$.

ACKNOWLEDGMENTS. V.O. acknowledges financial support from the National Science Foundation under Award No. DMR-1106024 and use of computing resources at the National Energy Research Scientific Computing Center, which is supported by the US DOE under Contract No. DE-AC02-05CH11231. The research of R.C. is partially supported by the US DOE under Contract No. DE-FG02-05ER25710. The research of S.O. was supported by the Office of Naval Research (Grant N00014-11-1719).

1. R. N. Bracewell. *The Fourier transform and its applications*, volume 31999. McGraw-Hill New York, 1986.
2. E Oran Brigham. *The fast Fourier transform and its applications*. Prentice Hall, 1988.
3. I. Daubechies. *Ten lectures on wavelets*, volume 61. SIAM, 1992.
4. V. Ozoliņš, R. Lai, R. Caffish, and S. Osher. *Compressed modes for variational problems in mathematics and physics*. submitted, 2013.
5. M. Unser, P. Thevenaz, and A. Aldroubi. *Shift-orthogonal wavelet bases*. *Signal Processing, IEEE Transactions on*, 46(7):1827–1836, 1998.
6. S. Osher, M. Burger, D. Goldfarb, J. Xu, and W. Yin. *An iterative regularization method for total variation-based image restoration*. *Multiscale Model. Simul.*, 4:460–489, 2005.
7. W. Yin, S. Osher, D. Goldfarb, and J. Darbon. *Bregman iterative algorithms for ℓ_1 -minimization with applications to compressed sensing*. *SIAM Journal on Imaging Sciences*, 1(1):143–168, 2008.
8. T. Goldstein and S. Osher. *The split bregman method for ℓ_1 -regularized problems*. *SIAM Journal on Imaging Sciences*, 2(2):323–343, 2009.
9. R. Lai and S. Osher. *A splitting method for orthogonality constrained problems*. *Journal of Scientific Computing*, to appear, 2013.
10. R. Coifman and M. Maggioni. *Diffusion wavelets*. *Applied and Computational Harmonic Analysis*, 21(1):53–94, 2006.